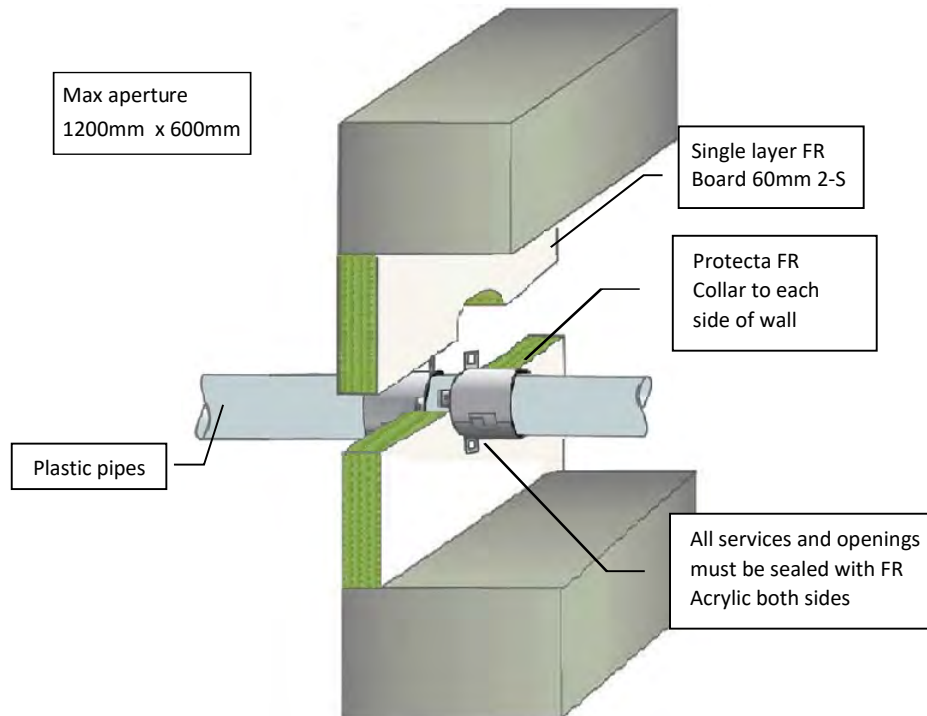


Protecta FR Board 60mm 2-S in Concrete Wall min 75mm thick Plastic Pipes inc PEX, HDPE, PPR, see pg 2

Installation Instructions

1. Before installing Protecta® FR Board ensure that the surface of all service penetrations and surrounding construction is free from all loose contaminants, dust and grease.
2. The single layer of 60mm 2-S FR Board may be installed flush with either face or anywhere inbetween.
3. Cut the board to suit the aperture dimensions and type and size of service penetrations. All exposed and cut edges of the board can be sealed with Protecta® FR Acrylic prior to fitting which will act as an adhesive and ensure a smoke tight seal.
4. Board to be friction fitted and collars fitted both sides, then all joints, gaps or imperfections in the installed seal must be filled with Protecta® FR Acrylic on both sides.
5. Protecta® FR Board can be over-painted with most emulsion or alkyd (gloss) paints.



Minimum separations and limitations

An aperture can include several services, and they may also be different. Services within the system Protecta® FR Board seal do not require a minimum separation, except pipes where pipe insulation penetrates the seal and plastic pipe penetrations which should be a minimum of 30 mm from other services in the aperture. Services should be a minimum of 25mm from seal edges. The total amount of cross sections of services (including insulation) should not exceed 60% of the penetration area. The minimum permitted separation between adjacent apertures is 200mm.



As a part of our policy of on-going product development and testing, we reserve the right to modify, alter or change product specifications without giving notice. All information contained in this document is given in good faith and is provided for guidance only. Any drawings provided are for illustrative purposes only. As Polyseam has no control over the methods or competence of installation and of prevailing site conditions, no warranties, expressed or implied, is intended to be given as to the actual performance of the product mentioned or referred to herein and no liability whatsoever will be accepted for any loss, damage or injury arising from the use of the information given.

For all technical details on the products specified please refer to the technical data sheets that can be found on www.firestopcentre.co.nz

Signed and approved:

System/FPA Register ID# FC104

Products	Protecta FR Board h 7k # Protecta FR Acrylic
Application	Fire stopping of pipes in concrete walls
Construction	Minimum wall thickness of 75mm and comprise concrete, aerated concrete or masonry, with a density of $\geq 650 \text{ kg/m}^3$

Fire & Sound classification

See page 2 for FRRs for all plastic pipe types

Smoke-safe ($<0.1\text{m}^3/\text{h}$ smoke leakage at 200Pa)

Sound reduction (seal only) STC 55



Protecta®

Polyseam Ltd, 15 St Andrews Road,
Huddersfield, West Yorkshire, HD1 6SB

Sheet size: A4	Drawn date & no: 20/4/21
Scale: NTS	Drawn by: K.B

Protecta FR Board 60mm 2-S
 in Concrete Wall min 75mm thick
 Plastic Pipes inc PEX, HDPE, PPR, etc

System/FPA Register ID# FC104

Pipes	Wall thickness	Collar	Classification	Collar	Classification
PVC-U, PVC-C and similar					
Up to 40mm diam	Up to 1.9mm	30mm	FRR -/90/45	50mm	FRR -/120/60
Up to 110mm diam	Up to 6.6mm	30mm	FRR -/90/30	50mm	FRR -/90/60
Up to 125mm diam	Up to 9.5mm			60mm	FRR -/60/60
Up to 160mm diam	Up to 9.5mm			60mm	FRR -/60/60
PE, PE-LD, PE-MD, PE-HD, PE-X, ABS, SAN+PVC and similar					
Up to 40mm diam	Up to 4.6mm	30mm	FRR -/60/30	50mm	FRR -/120/60
Up to 110mm diam	Up to 10.0mm	30mm	FRR -/60/30	50mm	FRR -/90/60
Up to 125mm diam	Up to 10.0mm			60mm	FRR -/60/60
Up to 160mm diam	Up to 10.0mm			60mm	FRR -/60/60
PP, PP-MV, PP-H, PP-R and similar					
Up to 40mm diam	Up to 4.6mm			50mm	FRR -/60/60
Up to 110mm diam	Up to 4.6mm			50mm	FRR -/60/60
Up to 125mm diam	Up to 9.1mm			60mm	FRR -/60/60
Up to 160mm diam	Up to 9.1mm			60mm	FRR -/60/60

Products	Protecta FR Board h 7k # Protecta FR Acrylic
Application	Fire stopping of pipes in concrete walls
Construction	Minimum wall thickness of 75mm and comprise concrete, aerated concrete or masonry, with a density of ≥ 650 kg/m3

Fire & Sound classification

Smoke-safe (<0.1m³/h smoke leakage at 200Pa)



Protecta[®]

Polyseam Ltd, 15 St Andrews Road,
Huddersfield, West Yorkshire, HD1 6SB

As a part of our policy of on-going product development and testing, we reserve the right to modify, alter or change product specifications without giving notice. All information contained in this document is given in good faith and is provided for guidance only. Any drawings provided are for illustrative purposes only. As Polyseam has no control over the methods or competence of installation and of prevailing site conditions, no warranties, expressed or implied, is intended to be given as to the actual performance of the product mentioned or referred to herein and no liability whatsoever will be accepted for any loss, damage or injury arising from the use of the information given.

Sheet size: A4	Drawn date & no: 9/4/21
	Drawn by: K.B